

FOUR SEASONS LODGE EXPANSION



EXPECTED OPENING: SUMMER 2027

MONTHLY PROGRESS SNAPSHOT

JUNE 17, 2026

Construction of the new long-term care home continues to advance steadily, with major progress being made across both the interior and exterior areas of the building. In the coming months, attention will increasingly shift toward interior finishing work, preparing resident spaces, and completing other outdoor areas related to access and parking.

Consultations have taken place with team members and current residents to help plan staffing needs and furnish resident spaces. Team members are actively exploring furniture options through trade shows, conferences, and on-site demonstrations.

Occupancy planning is also underway to prepare for the transition of current residents into the new building, as well as to welcome new residents next summer.

The DRDH Foundation is currently seeking participants for **Run for Home**, taking place Saturday, June 27, in support of the *Get On Board* Campaign.



DRDH Foundation Executive Director Megan Jones in front of the new FSL LTC Home.



View of the rear courtyard area with cladding installation in progress.

CONSTRUCTION UPDATE

As of June 2026, construction of the new long-term care home continues to advance steadily, with overall project completion now reaching approximately 65%. Interior work includes drywall installation, and mechanical and electrical room construction, which are 90% complete. Exterior work has also continued at a strong pace, including roofing, window systems, exterior glass installation, and weatherproofing components.



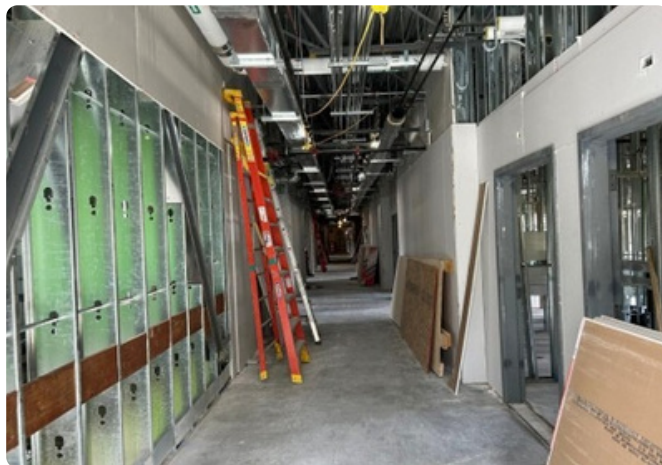
Roofing membrane has been installed and the granular base finish is at 90% completion.



View of the front entrance with cladding install in progress, and dry wall shipment being received through the window.



Milestone reached: All staircase concrete work was poured and completed in May. Red tape currently covers the yellow nose strips.



Substantial work has been undertaken for the both the interior. Second floor drywall tops and bottoms are at 90% and 40% complete respectively.

STAY CONNECTED

Monthly updates will continue throughout construction. For more information on project progress, fundraising opportunities, staffing timelines, or future resident planning, [please visit our Facebook page](#) or [website](#).

SHAPING THE HOME

Readiness Planning

While construction continues, significant work is also underway behind the scenes to prepare for the opening of the new Four Seasons Lodge building.

Before residents can move into the new home, a number of provincial requirements must be met, including inspections, operational planning, staffing readiness, and resident care and safety programs. DRDH teams are actively working with government partners and project consultants to meet these requirements and are approaching an important milestone, with several key plans, checklists, and operational submissions nearing completion.



DRDH Teams meeting to evaluate readiness progress.

This work will continue alongside construction over the coming months, helping to ensure a smooth transition when the new home is ready to welcome residents.

Future Staffing Opportunities

Planning for the new home continues to advance, and DRDH has now begun recruiting for key leadership positions that will help shape the future of long-term care services in our community. Recruitment is underway for several new roles, including the Vice President of Community & Long-Term Care, establishing the foundation for the next phase of hiring and operational planning.

Over the next year, DRDH expects to welcome approximately 180 to 200 new team members across a variety of clinical, support, leadership, and service roles.



Sign up for our Career Alerts!

Teams are also working closely with the Residents' Council and other stakeholders to gather feedback and develop staffing and volunteer model submissions for Ontario Health atHome.

Individuals interested in future opportunities are encouraged to sign up for Career Alerts through the DRDH website to receive notifications as new positions become available.

FUNDRAISING PRIORITIES

On June 27, participants will lace up their shoes for Run for Home, one of the DRDH Foundation's signature fundraising events. This year's event will support the Get On Board: Connecting Community campaign, which is raising funds for accessible transportation for residents of the new Four Seasons Lodge.

In a rural community like Deep River, transportation plays an important role in helping residents access healthcare services, maintain their independence, and stay connected to the people and places that matter most. Accessible transportation will help residents attend medical, dental, vision, and other healthcare appointments, supporting preventative care and helping them maintain their health and well-being. It will also make it possible for residents to participate in community outings, attend local events, and remain engaged with family and friends beyond the walls of the home.

These vehicles will help strengthen connections, reduce barriers to mobility, and support both physical and emotional well-being. As the new home takes shape, this investment will help ensure residents remain connected to the community they know and love, while creating opportunities that may benefit our broader community in the years ahead.

Register or support Run for Home at drdhfoundation.com/RunForHome



WHAT'S COMING NEXT

In the months ahead, work will continue on several key areas of the project, including:

- Recruitment campaigns
- Sourcing and testing sample furniture
- Logistics planning